

# Technical data

Pump name

BEST ONE MA

Customer	Date 06-February -2018	Company
Contact	Item no. 1.1	Issued by
Phone	Project	Phone
E-mail	Project ID EBARA Pump Selector-2114648	E-mail

## Requested data

1	Pump type	SUBMERSIBLE SUMP PUMPS	Fluid	Water, clean
2	Number of pumps / Reserve	1 / 0	Liquid temperature	K 293
3	Flow l/s	0	Kin. viscosity	mm <sup>2</sup> /s 1
4	Head m	0	Vapour pressure	kPa 2.2
5	Static head m	0	PH value	7
6	Inlet pressure kPa	10	Density	kg/m <sup>3</sup> 1000
7	Available system NPSH	0	Solids	Weight % 0
8	Environmental temperature K	290	Altitude	m 1000

## Pump

9	Pump name	BEST ONE MA	Frequency	Hz 50
10	Design	SUBMERSIBLE SUMP PUMPS	Installation type	With Float switch
11	Manufacturer	EPE	Impeller	Max. mm 85
12	Speed 1/min	2800	Diameter	Designed mm 85
13	No. of Stage	1		Min. mm 85
14	Connection Suction side	Strainer	Flow	Operating l/s
15	Connection Discharge side	UNI ISO 228		Max- l/s 2.83
16	Max Working Pressure kPa			Min- l/s 0.333
17	Shut-off head kPa	87.96	Head	Operating m
18	Total weight kg	See the table of "Dimensions".		- (Qmax.) m 1.8
19	Shaft power kW			- (Qmin.) m 8.4
20			Max. Shaft Power at max. impeller	kW
21	Required NPSH m		Efficiency	%

## Materials

22	Impeller	AISI 304		
23	Casing	AISI 304		
24	Shaft	AISI 303 + AISI 303 ceramic coated shaft sleeve		
25				
26				
27				

## Motor

28	Manufacturer	EPE Standard	Insulation class	F
29	Type	BEST ONE M_230_Single Phase	Phases	1~
30	Specific design	Submersible dry type / 50 Hz / Pole pairs 1	Frame size	
31	Rated power kW	0.25	Weight	kg 0
32	Number of poles	2	Electric voltage	V 230
33	Speed 1/min	2800	Electric current	A 2.3
34	Degree of protection	IP 68		
35				

## Remarks

# Performance curve Pump name BEST ONE MA

Customer	Date 06-February -2018	Company
Contact	Item no.	Issued by
Phone	Project	Phone
E-mail	Project ID EBARA Pump Selector-2114648	E-mail

## Requested data

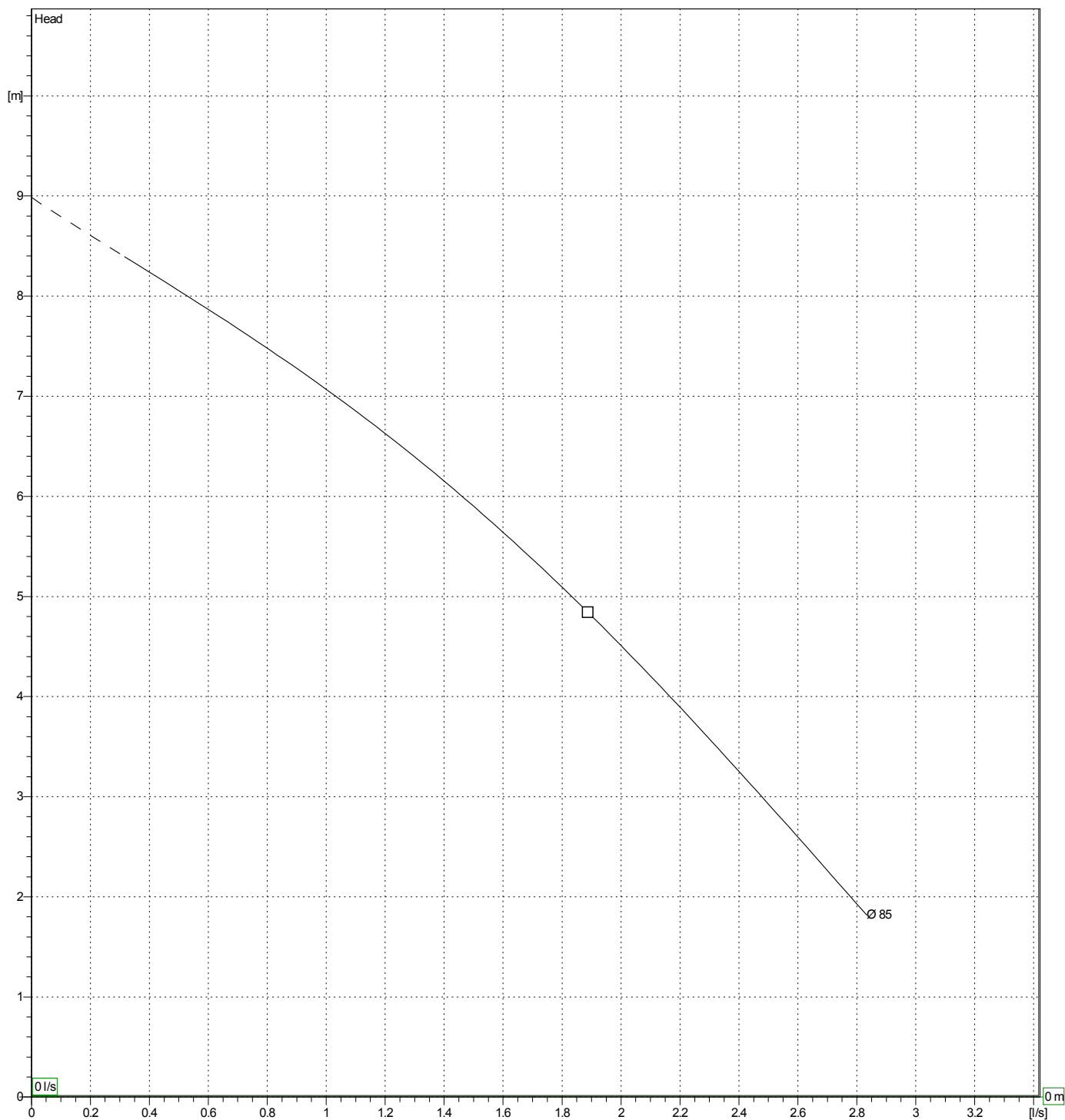
1	Flow	l/s	0
2	Head	m	0
3	Static head	m	0

## Pump

Operating Flow	l/s		Frequency	Hz	50
Operating Head	m		Number of poles		2
Impeller Diameter	Designed mm	85	Speed	1/min	

Test standard: ISO 9906:2012 - Grade3B

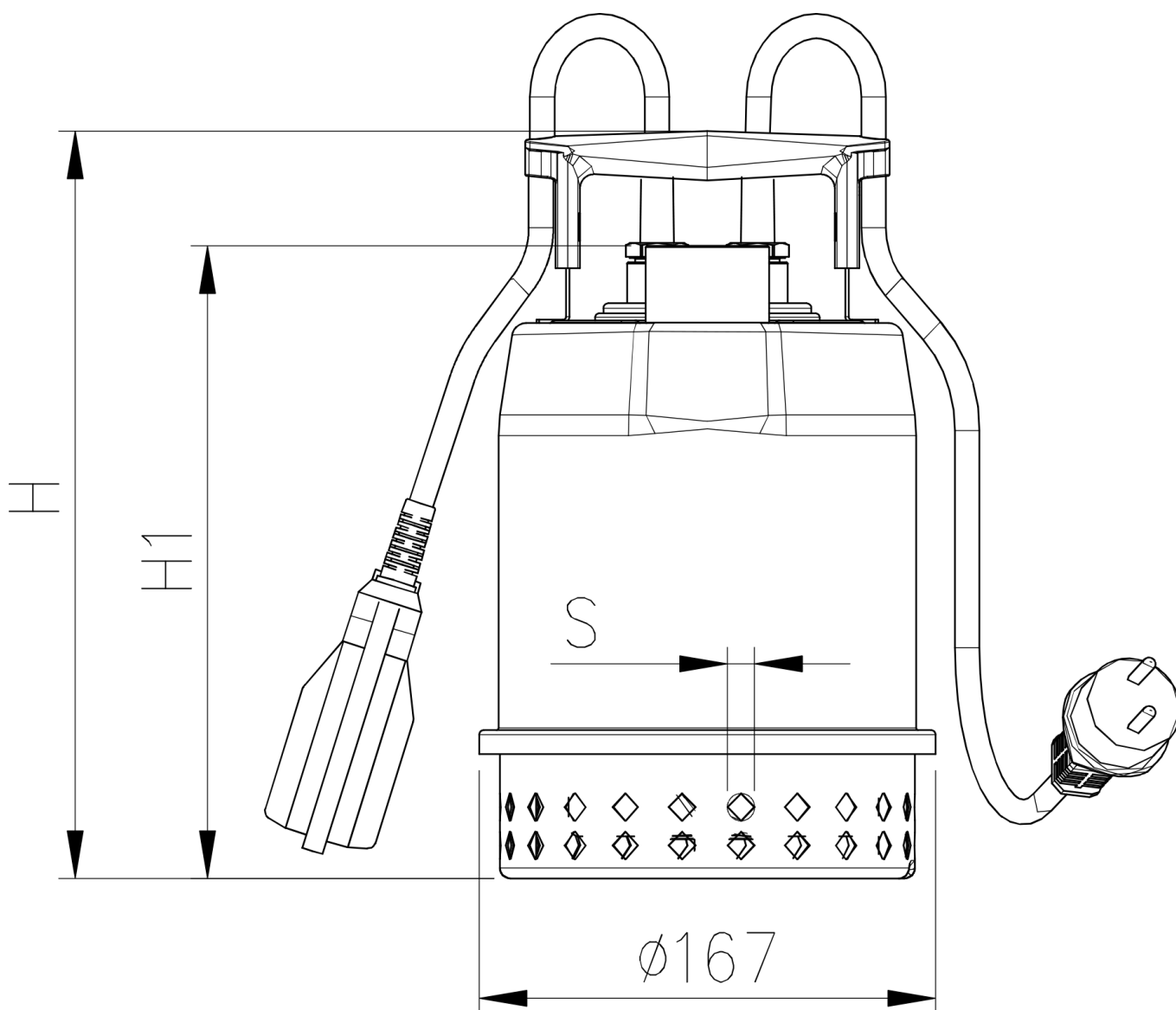
Water, clean [100%] ; 293K; 998.3kg/m³; 1mm²/s



# Dimensions

Pump name BEST ONE MA

Customer	Date 06-February -2018	Company
Contact	Item no.	Issued by
Phone	Project	Phone
E-mail	Project ID EBARA Pump Selector-2114648	E-mail

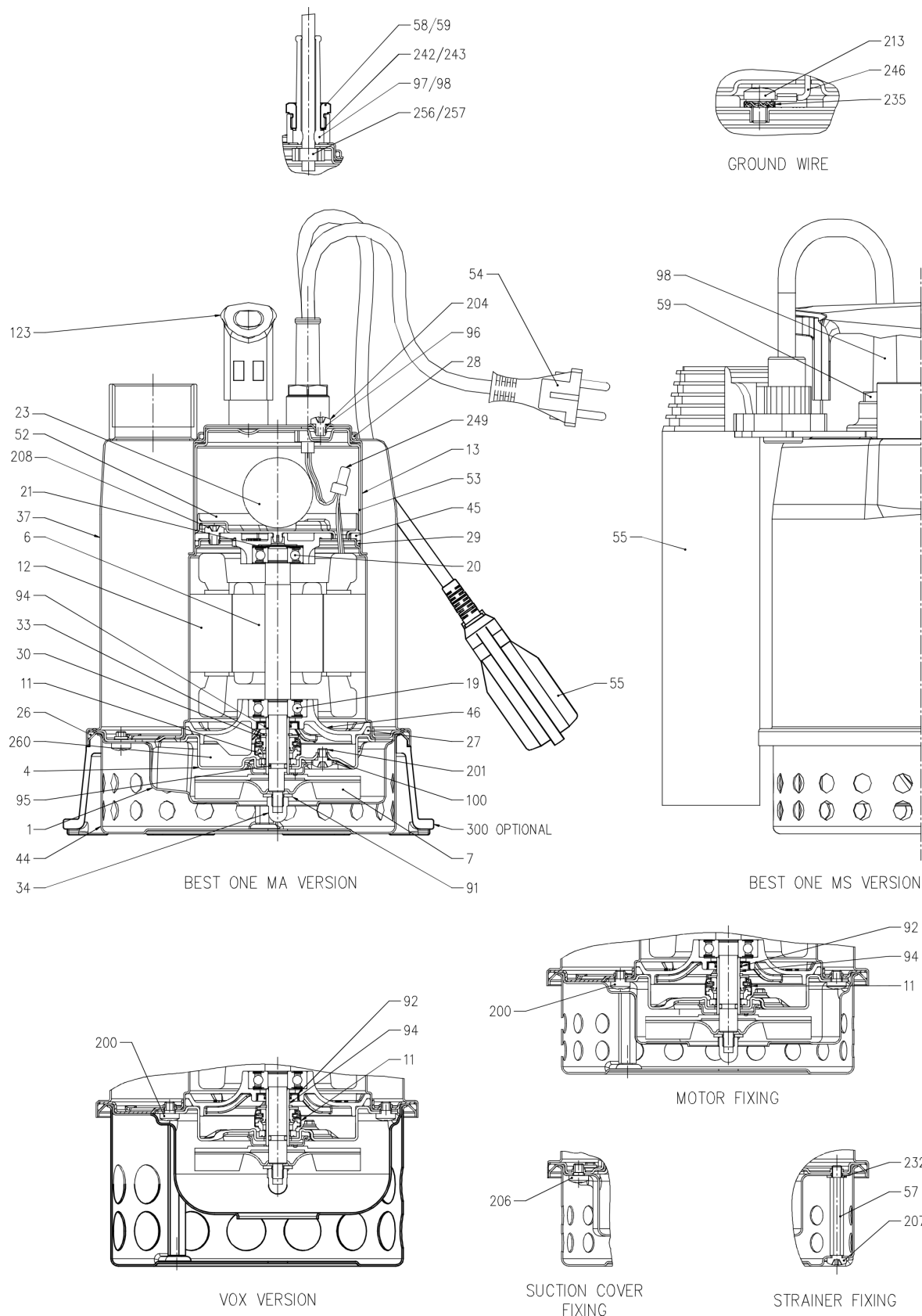


Dimensions in		mm						
1	H	273						
2	H1	231						
3	S	10						
4	Weight PUMP	4.6 kg						

# (1/4) Construction

Pump name BEST ONE MA

Customer	Date 06-February -2018	Company
Contact	Item no.	Issued by
Phone	Project	Phone
E-mail	Project ID EBARA Pump Selector-2114648	E-mail



# (2/4) Construction

Pump name BEST ONE MA

Customer	Date 06-February -2018	Company
Contact	Item no.	Issued by
Phone	Project	Phone
E-mail	Project ID EBARA Pump Selector-2114648	E-mail

N°	PART NAME	MATERIAL	DIMENSIONS	STANDARD	Q.TY
1	Suction cover	EN 14301(AISI 304)	-	-	1
4	Casing cover	EN 14301(AISI 304)	-	-	1
6	Shaft with rotor	EN 14305 (AISI 303)	-	-	1
7	Impeller	EN 14301(AISI 304)	-	-	1
11	Mechanical seal [1]	[1]	[1]	-	1
12	Motor frame with stator	EN 14301(AISI 304)	-	-	1
13	Motor cover	EN 14301(AISI 304)	-	-	1
19	Lower ball bearing	-	-	-	1
20	Upper ball bearing	-	-	-	1
21	Adjusting ring	-	-	-	1
23	Capacitor [2]	-	-	-	1
26	O-ring	NBR	159.5x3	-	1
27	O-ring	NBR	88.5x3.53	-	1
28	O-ring	NBR	75.87x2.62	-	1
29	O-ring	NBR	75.87x2.62	-	1
30	Washer	EN 14301(AISI 304)	12x21x1	-	1
33	Seeger ring	Carbon steel TC80	12	UNI 7435	1
34	Impeller nut	A2 - 70 UNI 7323	M 6	UNI 5721	1
37	Pump casing	EN 14301(AISI 304)	-	-	1
44	Strainer	EN 14301(AISI 304)	-	-	1
45	Upper bearing housing	EN 1706 AC-46000 D	-	-	1
46	Lower bearing housing	EN 1706 AC-46000 D	-	-	1
52	Terminal insulating base	PA 6 class V-0	-	-	1
53	Terminal insulating box	PA 6 class V-0	-	-	1
54	Power cable	-	-	-	1
55	Switch [3] [4]	-	-	-	1
57	Spacer	EN 14301(AISI 304)	-	-	2
58	Power cable connector	OT 58 UNI 5705-65 Nickel-plated Brass	-	-	1
59	Switch cable connector [3]	OT 58 UNI 5705-65 Nickel-plated Brass	-	-	1
91	Washer	EN 14301(AISI 304)	-	-	1
92	Lip seal	NBR	22x12x4	-	1
94	Shaft sleeve	EN 14305 (AISI 303) ceramic coated	-	-	1
95	O-ring	NBR	6.07x1.78	-	1
96	O-ring	NBR	4.48x1.78	-	1
97	Power cable connector	NBR	-	-	1
98	Switch cable connector [3]	NBR	-	-	1
100	O-ring	NBR	4.48x1.78	-	1
123	Handle	PP	-	-	1
200	Screw	A2 - 70 UNI 7323	M 5x6	UNI 7687	4
201	Screw	A2 - 70 UNI 7323	M 5x6	UNI 7687	1
204	Screw	A2 - 70 UNI 7323	M 5x6	UNI 7687	1
206	Screw	A2 - 70 UNI 7323	M 5x6	UNI 7687	3
207	Screw	A2 - 70 UNI 7323	M 5x6	UNI 7687	2
208	Screw	A2 - 70 UNI 7323	M 5x6	UNI 7687	3
213	Screw	A2 - 70 UNI 7323	M 4x6	UNI 7687	1
232	Washer	PA 6	5.5x10x1	-	1
235	Washer	Zinked Steel	4	UNI 8842	1
242	Washer	EN 14301(AISI 304)	13.4x15.9x1	-	1
243	Washer [3]	EN 14301(AISI 304)	13.4x15.9x1	-	1
246	Ground wire	-	-	-	1
249	Cap terminal	-	-	-	4
256	Strain relief	-	-	-	1
257	Strain relief [3]	-	-	-	1
260	Oil	Esso Marco 152	-	-	40 cc
300	Minimum suction system [5]	Thermoplastic elastomer vulcanizate	-	-	-

[1] See **CONSTRUCTION 4**

[2] Only for Single Phase

[3] Only for switch version

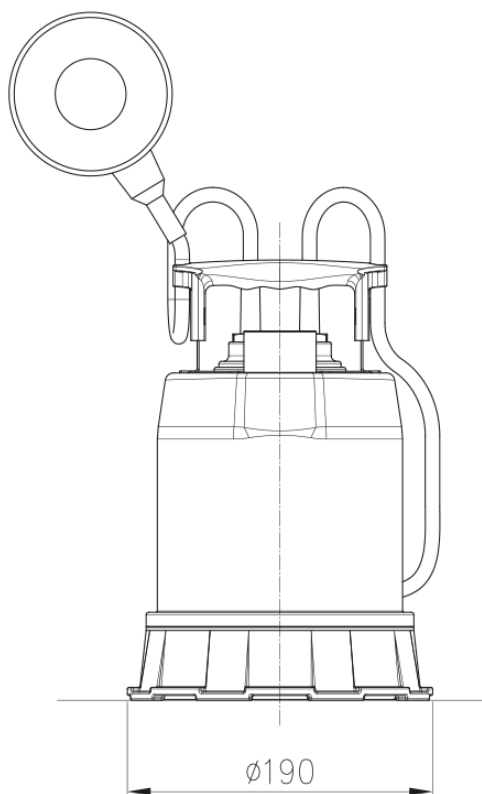
[4] It could be floating or magnetic type

[5] See **CONSTRUCTION 3 (OPTIONAL)**

# (3/4) Construction

Pump name BEST ONE MA

Customer	Date 06-February -2018	Company
Contact	Item no.	Issued by
Phone	Project	Phone
E-mail	Project ID EBARA Pump Selector-2114648	E-mail



LEVEL	
Minimum starting suction level	10 mm
Minimum suction level capability	3 mm

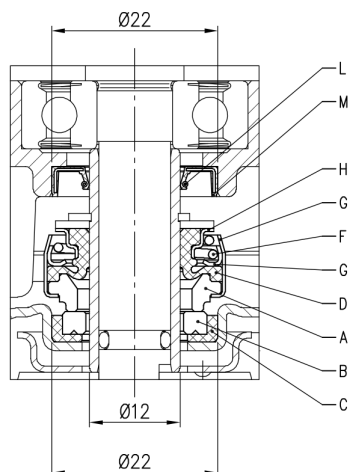
COMPATIBILITY				
Type pumps	Version			
	1~			3~
	M	MA	MS	
BEST ONE	✓	✓	✗	✓
BEST ONE VOX	✗	✗	-	✗

- ✓ Compatible
- ✗ Not compatible
- This model don't exist

# (4/4) Construction

Pump name BEST ONE MA

Customer	Date 06-February -2018	Company
Contact	Item no.	Issued by
Phone	Project	Phone
E-mail	Project ID EBARA Pump Selector-2114648	E-mail



REF	PART NAME	MATERIAL
A	Rotary seal ring	Carbon graphite
B	Stationary seal ring	Ceramic
C	Gasket	NBR
D	Bellows	NBR
F	Self driving spring	EN 1.4301 (AISI 304)
G	Frame	EN 1.4301 (AISI 304)
H	Retainer ring	EN 1.4301 (AISI 304)
L	Spring	EN 1.4318 (AISI 302)
M	Lip	NBR