

Customer	Date	2/23/2018
Contact	Project	
Phone number	Project no.	
Email		

22HM05S55T5VVBE

104605111

Operating data

Pump type	Single head pump	Fluid	Water
No. of pumps / Reserve	1 / 0	Operating temperature t A	°C 4
Nominal flow	m ³ /h 0	pH-value at t A	7
Nominal head	m 0	Density at t A	kg/m ³ 1000
Static head	m 0	Kin. viscosity at t A	mm ² /s 1.569
Inlet pressure	kPa 9.8	Vapor pressure at t A	kPa 100
Environmental temperature	°C 20	Solids	0
Available system NPSH	m 0	Altitude	m 0

Pump data

Make	Lowara	Nominal	m ³ /h ()
Speed	rpm 2900	Flow	Max- m ³ /h 29
Number of stages	5		Min- m ³ /h
Max. casing pressure	kPa		Nominal m
Max. working pressure	kPa 749.2	Head	at Qmax m 35.3
Head H(Q=0)	m 76		at Qmin m 76.4
Weight	kg 42	Shaft power	kW ()
	Max. mm 73	Max. shaft power	kW 5
Impeller R	designed mm 73	Efficiency	%
	Min. mm 73	NPSH 3%	m

Pump Materials

ADAPTER	Aluminium
Diffuser and upper spacer	Stainless steel
Fill / drain plugs	Stainless steel
Head	Stainless steel
IMPELLER	Stainless steel 304
Outer sleeve	Stainless steel
SEAL HOUSING	Stainless steel
SHAFT	Stainless steel
Shaft sleeve and bushing	Tungsten carbide
Tie rods	Stainless steel
WEAR RING	Technopolymer
Ring with foot	Aluminium

Shaft Seal

Mechanical Seal	Roten
HM - uniten	
Rotating Assembly	V-Ceramic
Fixed Assembly	B-Resin impregnated carbon
Elastomers	E - EPDM
Springs	G-AISI 316
Other Components	G-AISI 316

Motor data

Manufacturer	Lowara	Electric voltage	400 V	Speed	2910 rpm	Insulation class	F
Specific design	IE3 Three phase surface motor - e-HM			Frame size	56	Colour	RAL 5010
Type	PLM112HM../355 E3	Electric current	10.5 A	Weight	0 kg		
Rated power	5.5 kW	Degree of protection	IP 55				

Remarks:

Customer	Date	2/23/2018
Contact	Project	
Phone number	Project no.	
Email		

22HM05S55T5VVBE

104605111

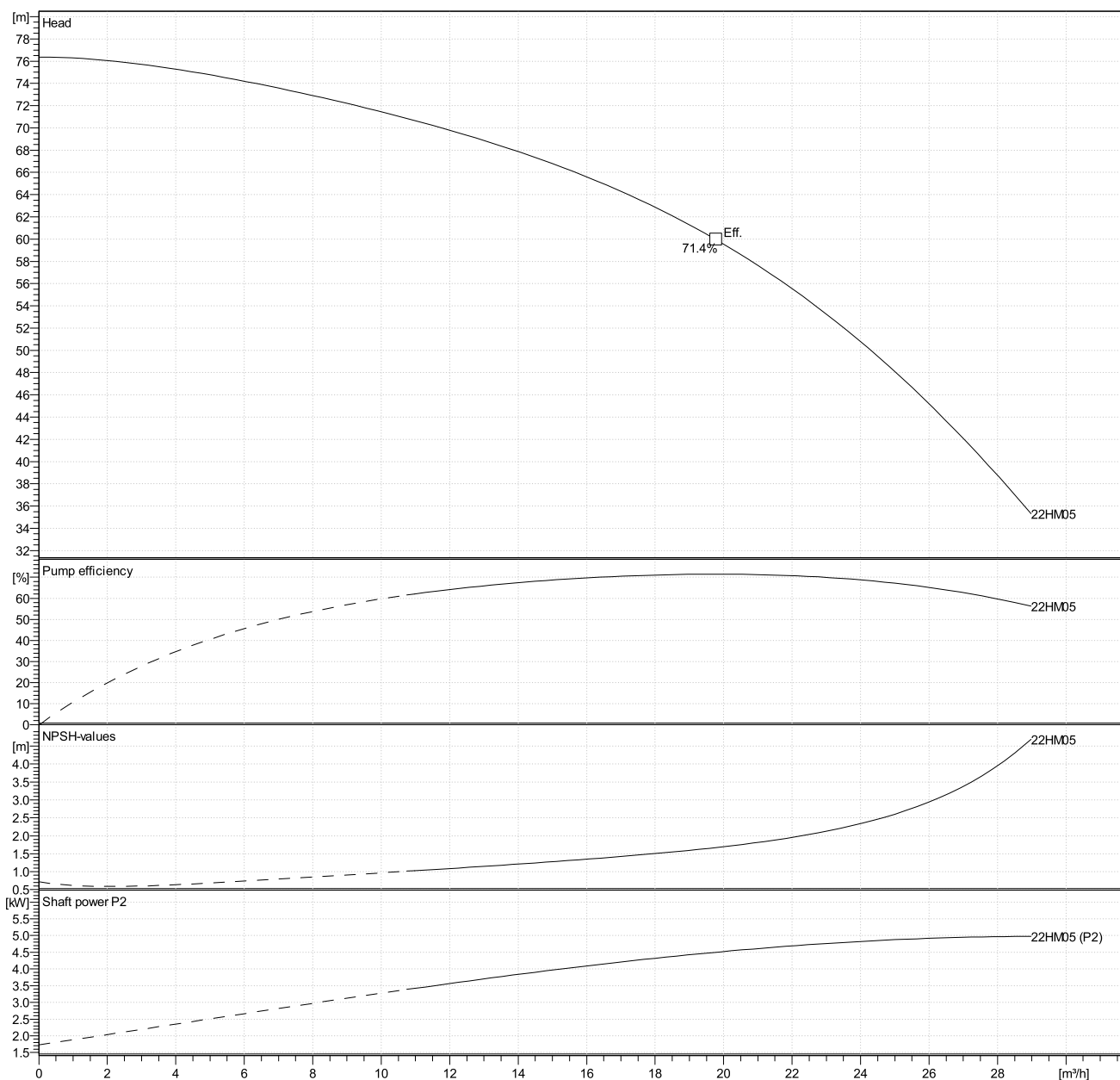
Hydraulic Data

Operating Data Specification		Hydraulic data (duty point)	Impeller design	
Flow	0 m ³ /h	Flow	Impeller R	73 mm
Head	0 m	Head	Frequency	50 Hz
Static head	0 m		Speed	2900 rpm

Power datas referred to:

Water [100%] ; 4°C; 1000kg/m³; 1.57mm²/s

Performance according to ISO 9906:2012 – Grade 3B

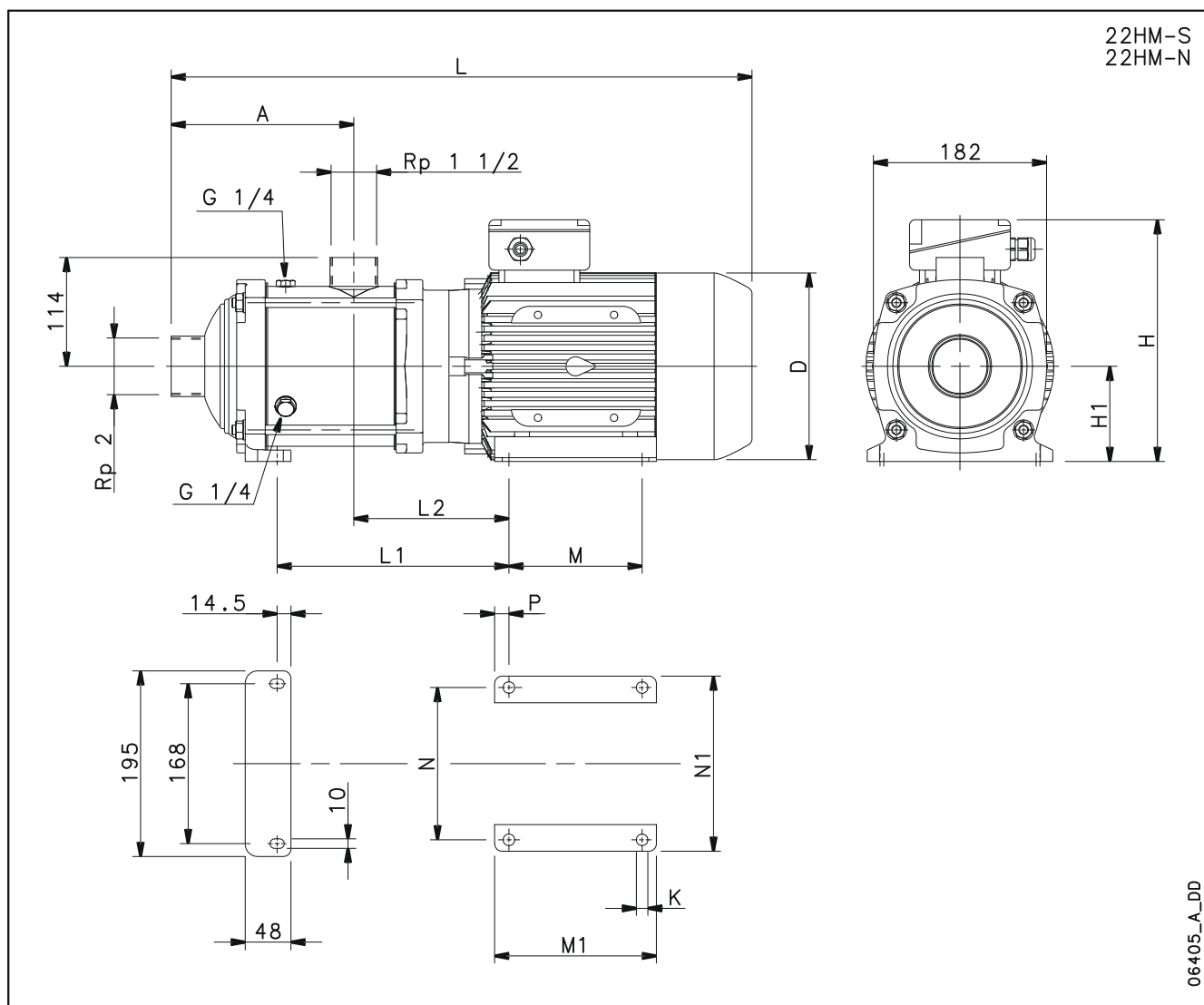


Customer	Date	2/23/2018
Contact	Project	
Phone number	Project no.	
Email		

22HM05S55T5VVBE

104605111

Drawing



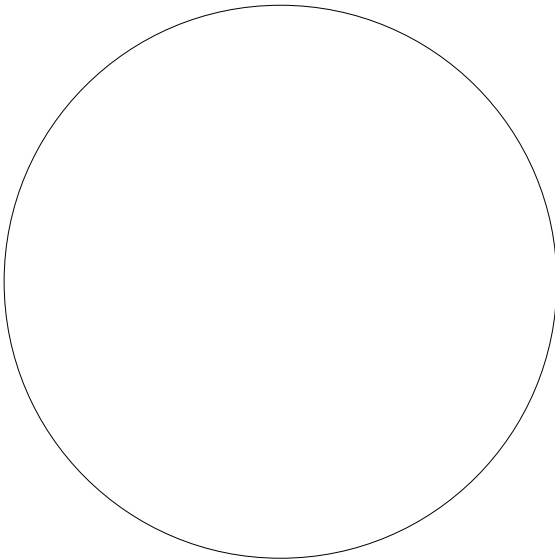
Dimensions mm

A	240	M1	170			Weight
D	214	N	190			42 kg
H	280	N1	219			
H1	112	P	15			
K	12	PN	10			
L	693					
L1	299					
L2	170					
M	140					

22HM05S55T5VVBE 104605111

Total lifetime	15	Inflation rate (rate of price increases)	2 %
Annual operating time	5600	Interest rate (for investment)	3 %
Energy cost per kWh	0.00 GBP		
Power input P1			

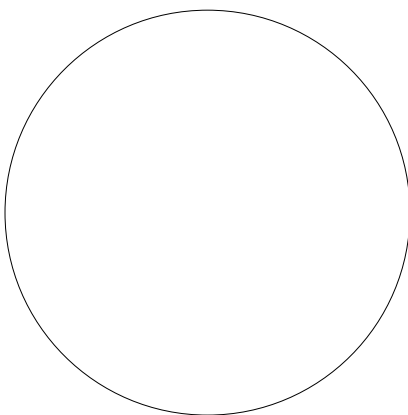
Total costs



GBP

0%	0.00 GBP	Energy
0%	0.00 GBP	Investment costs
0%	0.00 GBP	Installation & commissioning
0%	0.00 GBP	Operating cost
0%	0.00 GBP	Maintenance & repair
0%	0.00 GBP	Downtime
0%	0.00 GBP	Environmental
0%	0.00 GBP	Decommissioning

First year costs



GBP

0%	0.00 GBP	Energy (1st year)
0%	0.00 GBP	Investment costs (1st year)
0%	0.00 GBP	Installation & commissioning (1st year)
0%	0.00 GBP	Operating cost (1st year)
0%	0.00 GBP	Maintenance & repair (1st year)
0%	0.00 GBP	Downtime (1st year)
0%	0.00 GBP	Environmental (1st year)
0%	0.00 GBP	Decommissioning (1st year)